

## Description

---

- |                                     |  |
|-------------------------------------|--|
| 1. Photosensitive                   | Collect ambient luminosity value, turn on the infrared light when the current illuminance is less than 3 Lux.                  |
| 2. Reset button                     | The working state of the device, long press 3-5 seconds to restore the factory, the camera will have a voice prompt broadcast. |
| 3. SD card slot                     | TF card, storage video and playback video.   |
| 4. DC power supply                  | Power input  |
| 5. Network port and indicator light | Connect the Lan cable and check the current device status indicator light ( flashes once /1 s on hotspot mode)                 |

## ▶ Software Installation

### APP Download and Installation

Users can search “EseeCloud(IP Pro, VR Cam) ” on APP store or Google Play, or scan the QR code below to install the APP.



EseeCloud APP



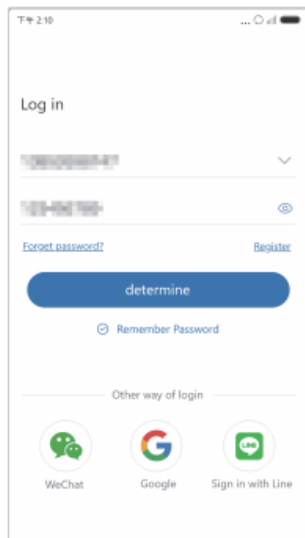
APP download

**Note:** For iOS system, it requires iOS 9.0 version or above. For Android, Android 5.1 or above.

## Account login

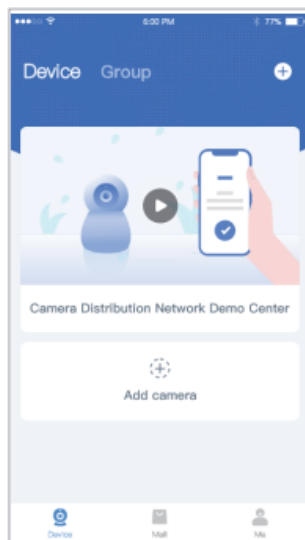
Account login: On the login interface, enter the account/ phone number/email, and the corresponding password, and click the "OK" button to log in.

Third-party login: APP supports third-party login. Click the third-party social software icon, jump to the APP to complete the authorization and log in.

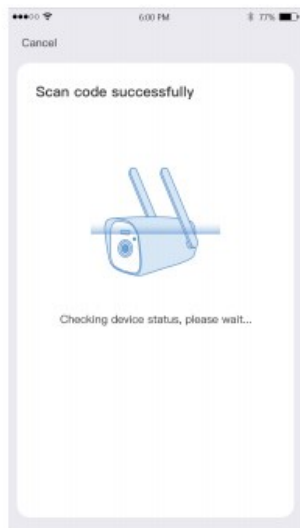
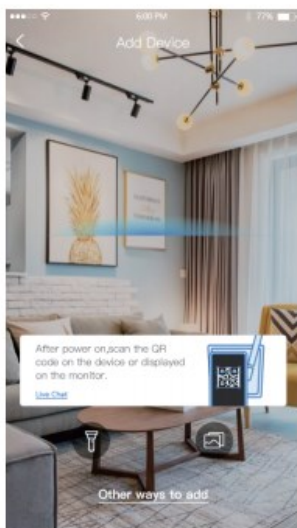


## ▶ Add camera by WiFi configuration

1. Open the APP, click the "+" icon in the middle of the interface to enter the scan code interface;



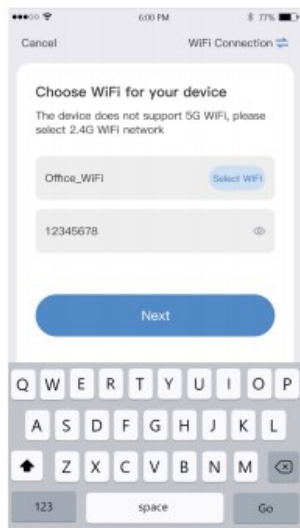
2. Scan the QR code on the camera body and wait for the camera status check to complete ;



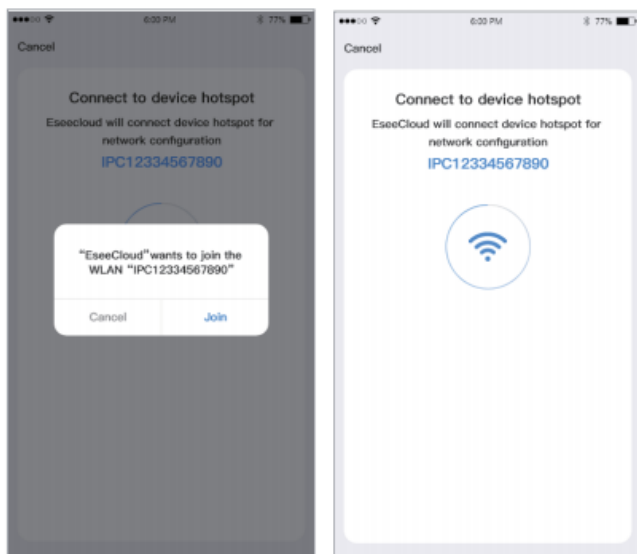
3. Check the camera indicator, when it is always on, click Next;



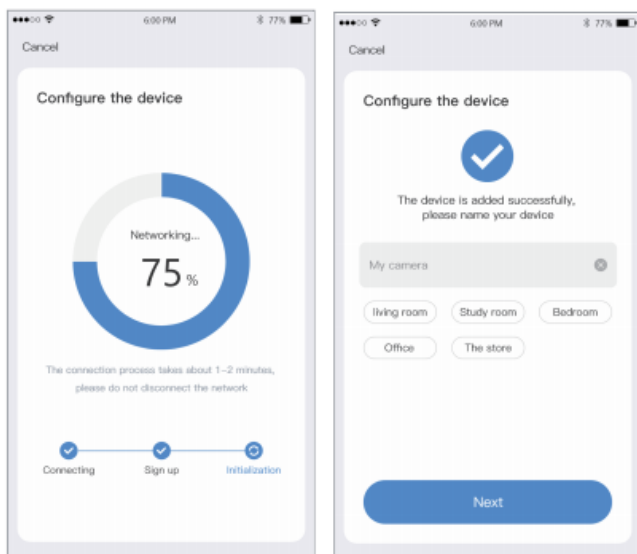
4. Select the WiFi that the camera needs to connect to, enter the password, and click Next;



5. Click "Join" in the pop-up prompt box to connect to the camera's hotspot;



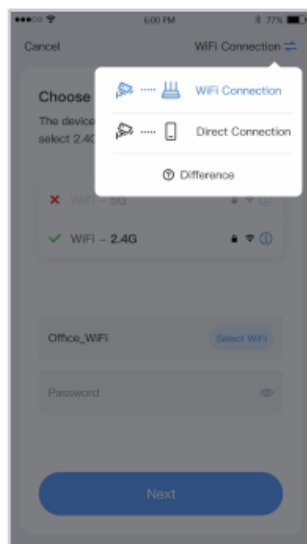
6. The hotspot connection is successful and enters the network configuration state. After the configuration is successful, set a name for the camera.



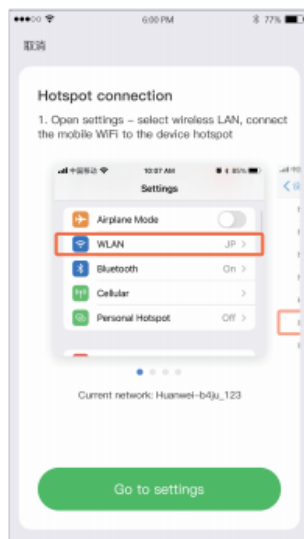
Note: If the device prompts that the WiFi configuration has failed, please check whether the WiFi has been connected to the network normally; if the device prompts an incorrect password, please check whether the WiFi password is entered correctly; the device does not support connecting to hidden WiFi and 5G network WiFi.

**If there is no WiFi network near where you install the camera, you can switch to the local direct connection to use:**

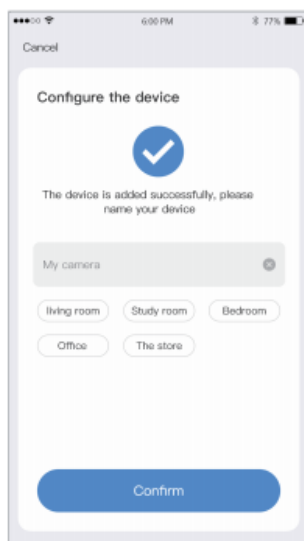
1. On the WiFi selection interface, click the "QR code configuration network" button in the upper right corner and switch to "Local Direct Connection";



2. Follow the instructions on the interface to connect to the hotspot of the camera;



3. Set a name for the camera and click Finish to add it to the camera list.



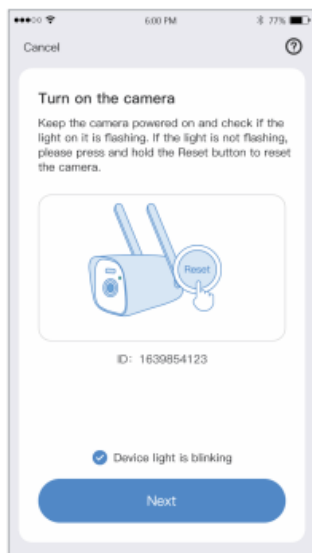
Note: The local direct connection needs to maintain the WiFi connection with the camera to preview the camera screen normally, and cannot be viewed remotely, The camera's own WiFi password is 11111111.

## When the QR code of the device cannot be found (or the scan code is unsuccessful):

1. Click "Other Add Methods" on the scan code interface, and select "Connect Camera Hotspot Add";



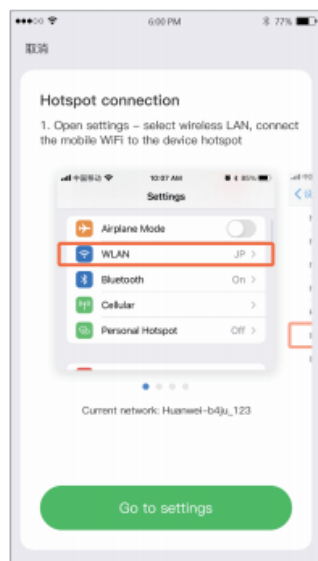
2. Check the status of the camera, wait for the indicator light to flash and click Next;



3. Select the WiFi that the camera needs to connect to, enter the password, and click Next;

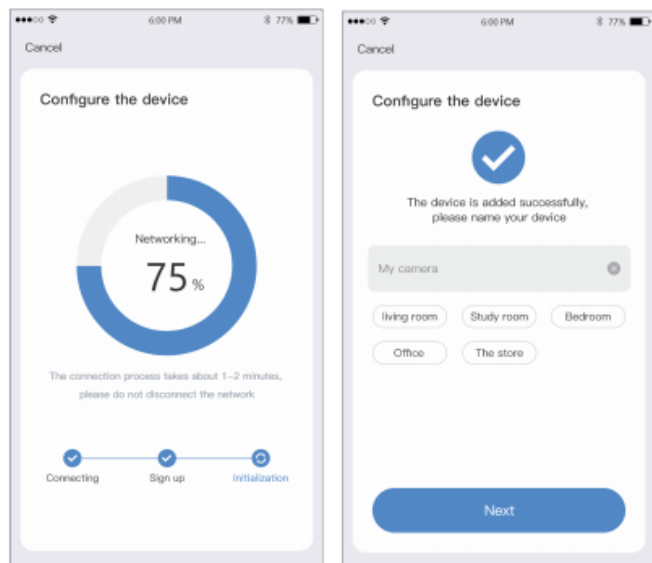


4. Follow the instructions on the interface to connect to the hotspot of the camera;





5. Enter the network configuration state after the hotspot connection is successful. After the configuration is successful, set a name for the camera.



## Warning



In case of fire or lightning, pls don't put product in damp and raining place, operate or maintain according to the user manual.



Be careful when you see attachment with a Dangerous Voltage which might cause serious electric accident.

	<b>Warning</b> CAUTION: RISK OF ELECTRIC SHOCK DO NOT OPEN	
<b>Warning</b>	To reduce electric shock, unprofessional people please don't open product front panel or rear panel	

<b>Warning</b> In case of electric shock and fire, pls don't use power supply beyond power list in user manual
---

## Notice:

1. Ensure your equity, pls read the user manual carefully before you use the product
2. Pls contact professional people if you need install and maintain the product
3. Working Environment: temperature of  $-20^{\circ}\text{C}\sim+60^{\circ}\text{C}$ , relative humidity under 85%
4. Pls don't exceed the user manual's standard range of temperature, humidity and voltage.